

Success Is
Never Ending
Failure Is Never Final



MATT SERIES
600x600MM

www.qurovitrified.com



Corporate Office :
Ser. No. 197, Nr. Amardham Temple, Matel
Tal. Wankaner, Dist. Morbi - 363 621. Gujarat, INDIA.

Email :
export@qurovitrified.com

Contact No. :
+91 99784 99883, +91 84012 13100

Web :
www.qurovitrified.com



“
An **Insight** Of
Combined **Beauty**
”



Quro Is A Rapidly Flourishing Tiles Manufacturer, We Combine Our Exceptional Talent And Tiles Manufacturing Experience To Create Products That Are “Timeless” In Their Manner. To Become The Leading Expert In The Ceramic Industry Today We Have Always Kept The Latest Trend In Our Minds And Have Succeeded In Presenting Our Flawless Tiles To Our Customers.

“
No Dream Is Too Big &
No Challenge Is Too Great
”



Today Circumstances in the ceramic sector are changing rapidly due to the latest technological advancements and there is always a need to innovate for a firm to survive in the market. In its response, Quro has taken full advantage of its unique collective abilities to optimize and modify its portfolio according to the latest times. We are constantly in an urge to strengthen our presence and implement our expertise gathered in all these years to develop core tiles manufacturing business. moreover the Quro team is committed to building a strong business portfolio for the future.

Quro's strengths are the combined abilities to facilitate its holistic vision in ceramic market, its expertise in conceiving the latest trend and a quality to manage & run them. By Leveraging our skills to identify potential growth sources in the ceramic guild, We want to work very hard and establish them as new generation core business. We have created a working system to ensure that our employees obtain the appropriate experience and develop into better professionals. We select manpower as per their capability and urge to learn. By Doing this Quro widens the scope for employment.

Our policy is simple, we do our best to continue meeting the expectations of our customers, growing our businesses in a way that we create economic, societal and environmental value. We thank each & everyone for their support and look forward to working collectively for an even richer tomorrow.



VISION

To Become The Fastest Growing And The Most Competitive Ceramic Manufacturer. To Be Respected For A High Level Of Integrity And Value. To Increase Our Production Capacity Persistently.



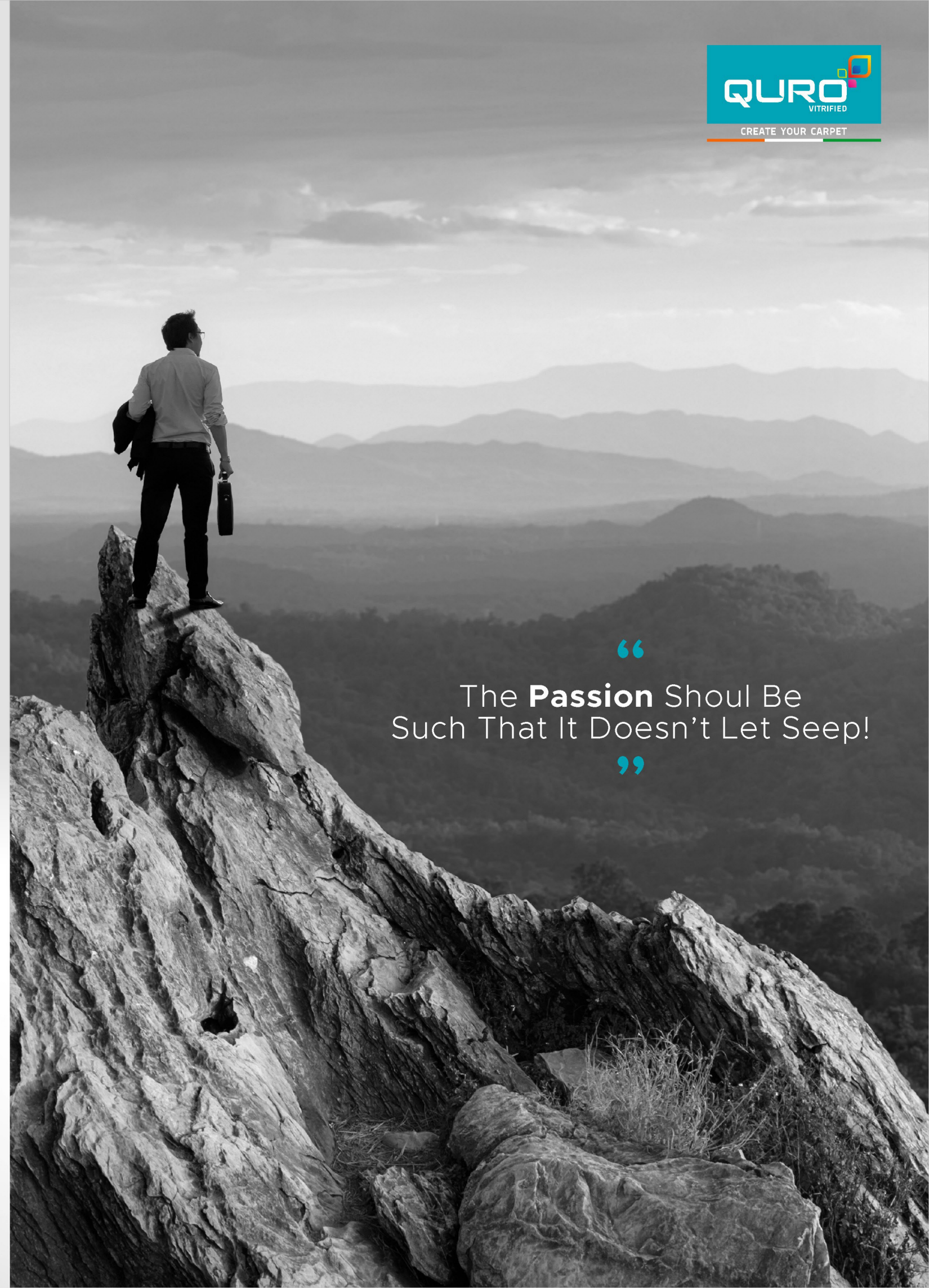
MISSION

To Satisfy Our Customers With The Best Quality Products And Customer Care. To Continuously Improve Our Range Of Products Through Innovations And Use Of New Technology. Work For The Development Of Our Country While Protecting The Environment And Use The Surpluses For The Benefit Of Employees And Society At Large.



FUTURE

At Quro We Assume That Inclusive Development Can Only Be Accomplished If Customers Are Satisfied And So We Always Place Their Satisfaction On The Highest Pedestal. Besides, Quro Has An Appreciation For Innovation, So We Are Also Adopting New Technology & Design Standards To Create Unique Products With Keeping Future Trends In Mind.



“
The **Passion** Shoul Be
Such That It Doesn't Let Sleep!
”

“

Space Blended
With Soothing **Textures**

”



MATT SERIES

Introducing a splendid collection of matt series with designs that ooze beauty through its colossal flow of beautiful textures. built to elevate the elegance and uniqueness around your space, Quro's completely new matt collection will help you to reconsider the home styling theory. So, take a quick tour of our matt collection which possesses all the physical characteristic of matt combined with designs of future trends.



MATT | 600x
600mm

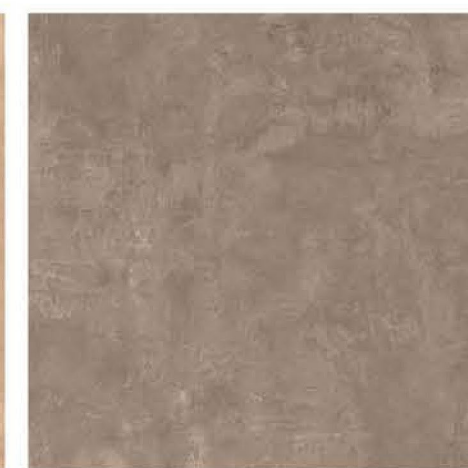
Obtain Solution
That You've
Dreamed



ACE BRONZE



ACE BROWN



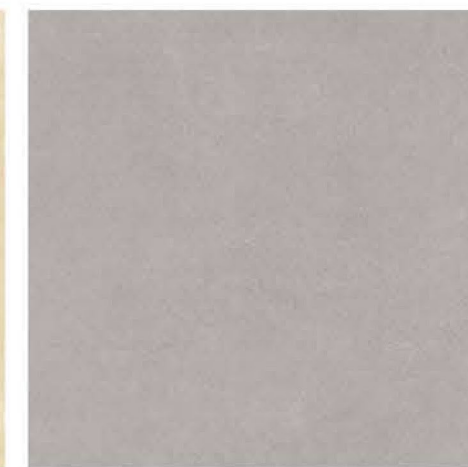
ACE CHOCO



ACE GREY



ACE IVORY

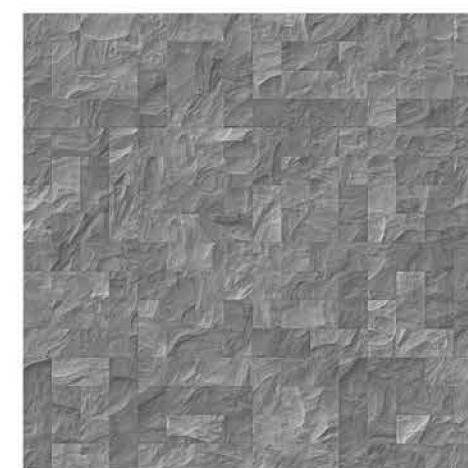


ARTECH GREY



MATT | 600x
600mm

Let Us
Design
Your Heritage



BARK ELEVATION



BENZER BROWN



BENZER GREY



BENZER IVORY



BENZER WHITE



BRICH WOOD BROWN



MATT | 600x
600mm

Stylofy
Your Space
With Matt Elegance!



BRICH WOOD GREY



BRICOLLA WOOD NATURAL



BRICOLLA WOOD WENGE



CEMENTO BEIGE



CEMENTO GREY

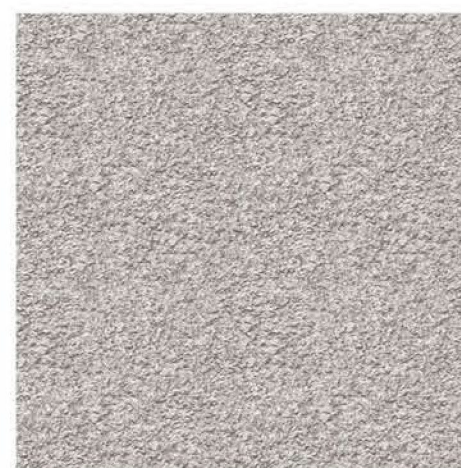


COFFEE WOOD



MATT | 600x
600mm

Prepare
Your Space
With The Best



CONCRETE



COTTON WOOD



DESERT WOOD BIANCO



DESERT WOOD BROWN



DESERT WOOD CREMA



DESERT WOOD GREY



MATT | 600x
600mm

Establish
Decors With
Uniform Allure



DORADA



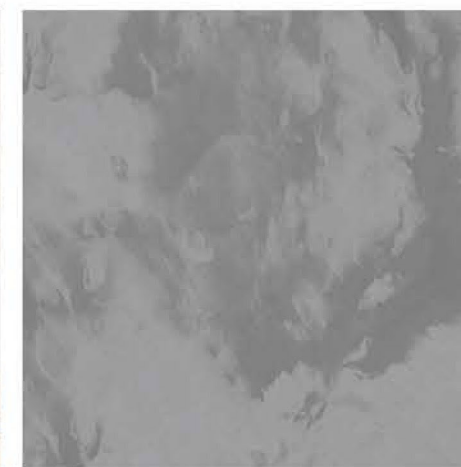
EVEREST MULTI STONE



FORESTA GREY



FORESTA MULTI



FUSION SPARRO



GEONEX BEIGE

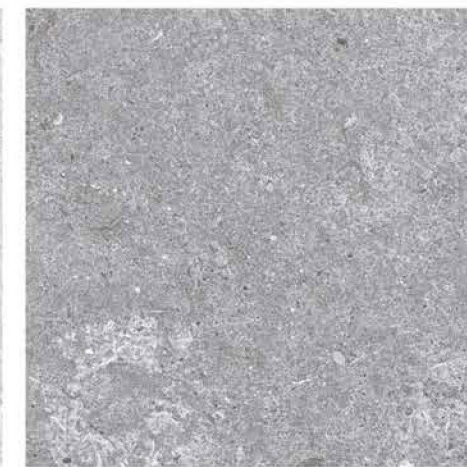


MATT | 600x
600mm

Have An Affection
For Aesthetic
Decor



GEONEX BIANCO



GEONEX GREY



GEONEX BROWN



GRANITE BROWN



HUMMER STONE SUN



HEMTON WOOD

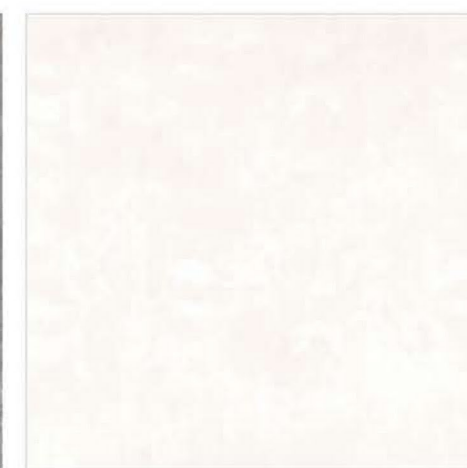


MATT | 600x
600mm

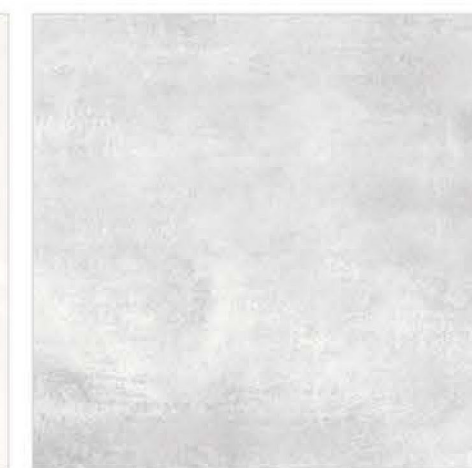
Visions Awarding
Exceptional
Delight



KEMIK BLUE



KILOS BIANCO



LENZULA WHITE



MACCOS BLACK



MACCOS COFFEE



MARS BEIGE



MATT | 600x
600mm

Your Decor
Assuring Eternal
Pleasure



MARS CHOCO



MERCURY WOOD



METAL BROWN



MULTI RUST DARK



MULTI RUST LIGHT

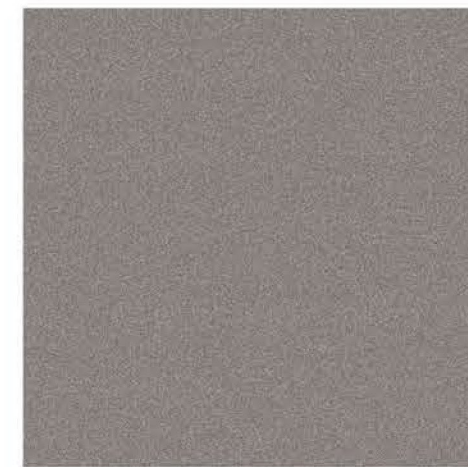


NATURAL WOOD

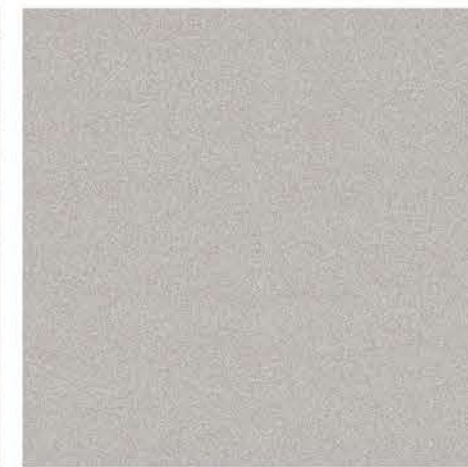


MATT | 600x
600mm

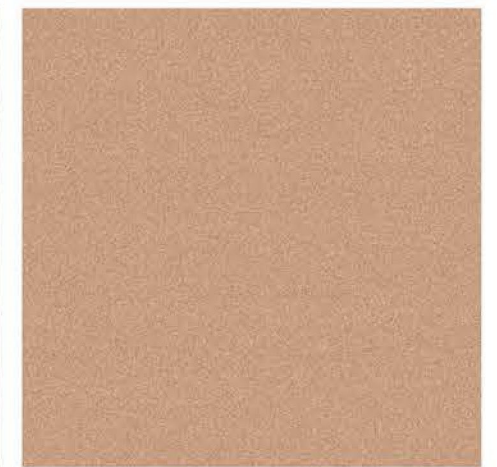
A Brand
New Range Of
Striking Designs



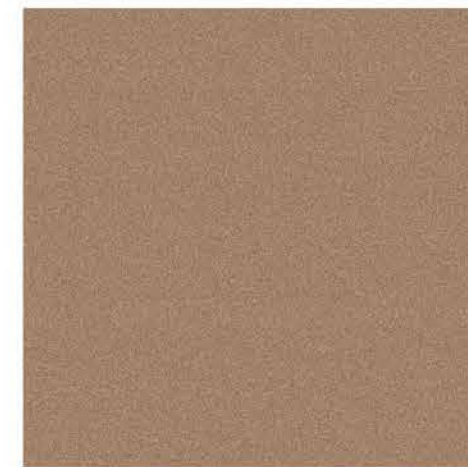
NEW SAND BLACK



NEW SAND GREY



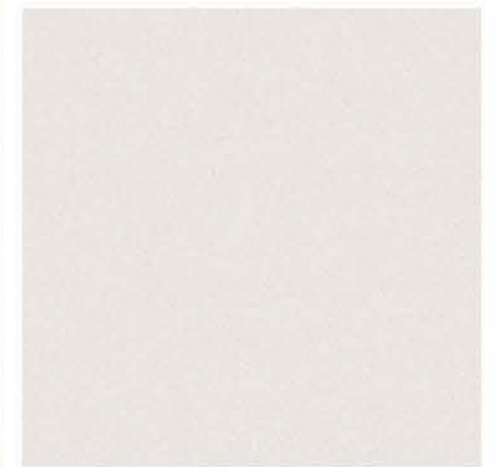
NEW SAND BROWN



NEW SAND CHOCO



NEW SAND IVORY



NEW SAND WHITE



MATT | 600x
600mm

An Abode
Sparkling
With Cheerfulness



PANTHER BEIGE



PANTHER GRAY



PIETRA WOOD NATURAL



PIETRA WOOD RUST



PINE WOOD



SOEL TEAK BROWN



MATT | 600x
600mm

Trendy
Decor Is Here
To Woo You



SOEL TEAK WENGE



STONILIA GREY



STONILIA WHITE



SWISS IVORY



TIMBER WOOD BROWN



TIMBER WOOD CREMA



MATT | 600x
600mm

A Brand
New Range
Of Striking Designs



TRAVERA BLACK



TRAVERA GREY



TRAVERA BROWN



VINTAGE MOSIAC BROWN



VINTAGE MOSIAC IVORY



VINTAGE MOSIAC LIGHT



MATT | 600x
600mm

Spreading
Calm Ambiance
Around You



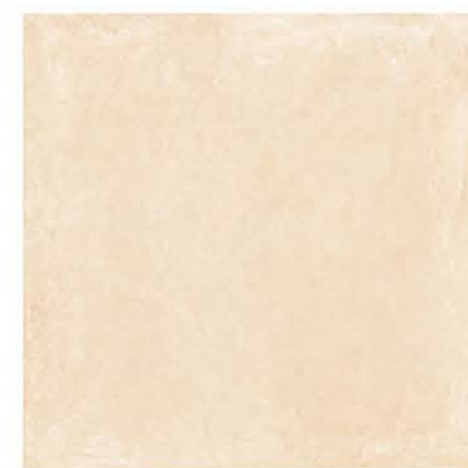
VINTAGE MOSIAC MULTI



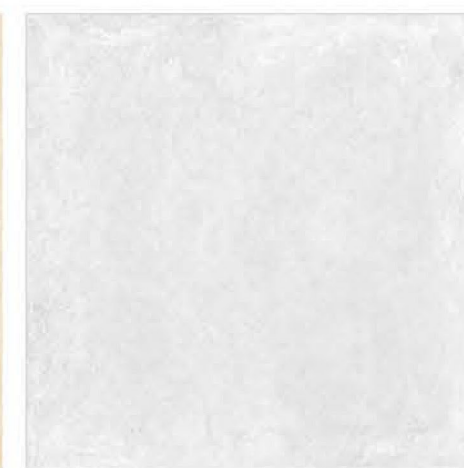
VISTRA WOOD BLACK



VISTRA WOOD BROWN



VIVID BEIGE



VIVID BIANCO



VIVID CHOCO



MATT | 600x
600mm

Encounter
Excellence
At Every Angle



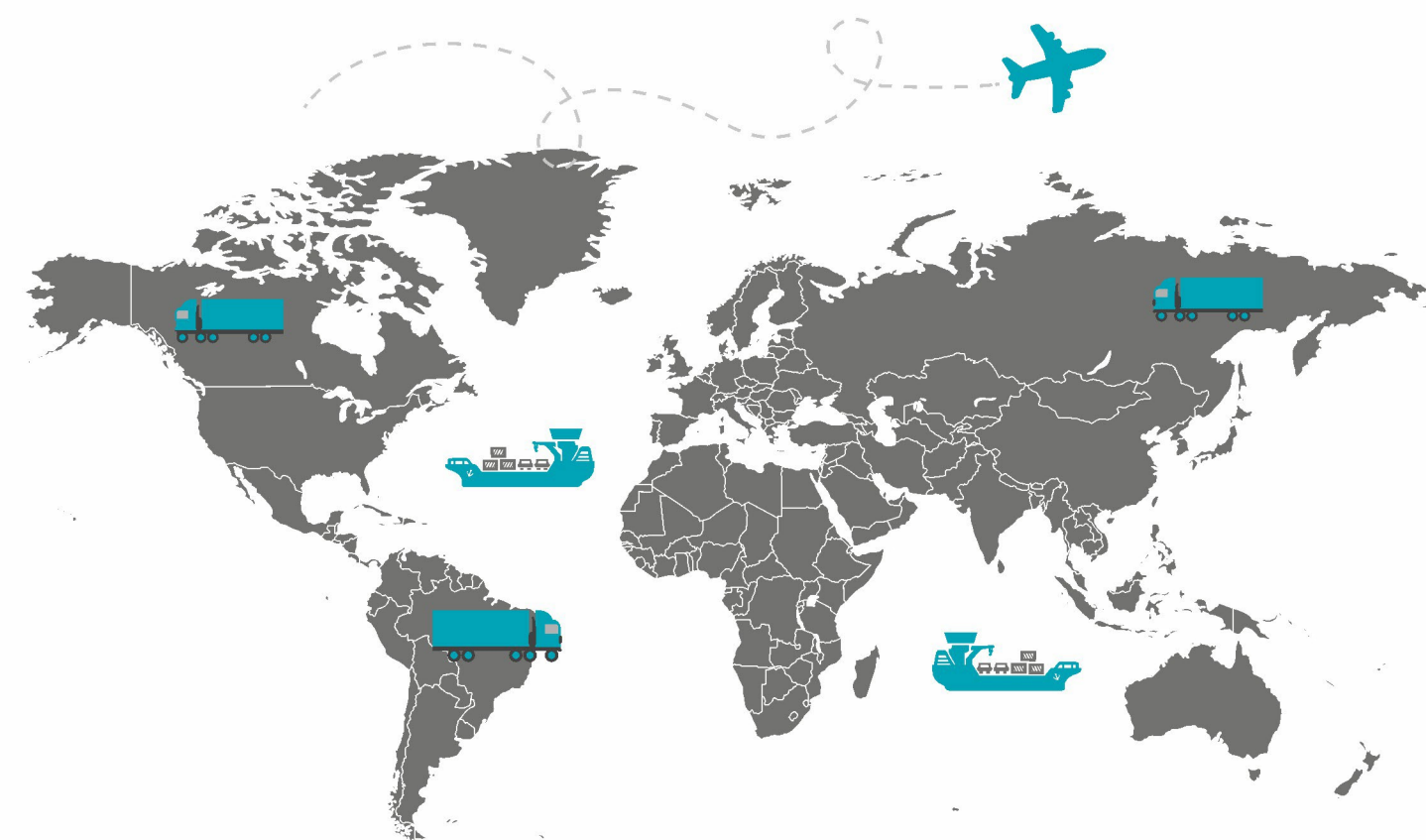
VIVID BROWN



VIVID GREY



ZENITH STONE



EXPORT IN

Quro Export The Finest Of its Products Across The World And is Renowned For its Trustworthy Trade Practices. We Commenced At A Slow Pace With Low Exporting Rates But With Our Market Understanding Capability, We Have Become A Successful Tiles Exporter And Are Amongst The Ablest Tiles Exporters From Asia.

- | | | | | | | | | | | | | |
|--------|--------------|------|-----------|----------|-----------|--------|-------|------------|------------|----------|-----------|--------------------|
| IRAQ | SAUDI ARABIA | OMAN | MAURITIUS | ROMANIA | SRI LANKA | KUWAIT | YEMEN | UAE | BANGLADESH | SLOVAKIA | KOSOVO | MEXICO |
| JORDAN | VIETNAM | USA | TAIWAN | COLOMBIA | NIGERIA | U.K | NEPAL | UZBEKISTAN | RUSSIA | LIBYA | INDONESIA | DOMINICAN REPUBLIC |

TECHNICAL SPECIFICATION

DIGITAL GLAZED VITRIFIED TILES

Sr. No.	CHARACTERISTICS	ISO TEST METHODS	VITRIFIED TILES REQUIREMENT AS PER ISO 13006 EN176	QURO VALUE
A	Dimention & Surface Quality			
1	Deviation In Length & Width	ISO 10545-2	+ 0.6%	+ 0.1%
2	Deviation In Thickness	ISO 10545-2	+ 5.0%	+ 10%
3	Straightness Of Sides	ISO 10545-2	+0.5%	+ 0.08%
4	Rectangularity	ISO 10545-2	+0.6%	+ 0.15%
5	Surface Flatness	ISO 10545-2	+0.5%	+ 0.2%
6	Color Difference	ISO 10545-2	Unaltered	No Change
B	Physical Properties			
1	Water Absorption	ISO 10545-3	= 0.5%	0.2%
2	Flexural Strength (MOR)	ISO 10545-4	= 35 N mm2	38 N mm2
3	Mohs Hardness	EN 101	As per manufacture Norms	Min 5
4	Flexural Breaking Strength	ISO 10545-4	> 1300 N	1900 N
5	Bulk Density (GM/CC)	DIN 51082	> 2 gnvcc	2.35 gm/cc
6	Glossiness	GLOSS METER	As per manufacture Norms	Min 90%
7	Slip Resistance Coefficient of Friction	ISO 10545-17	> 0.4	> 9.5
8	Resistance of Surface Abrasion	ISO 10545-6	As per manufacture Norms	> PELV
C	Chemical Properties			
1	Staining Resistance	ISO 10545-14	Resistant	Resistant
2	Household Chemicals	ISO 10545-13	No Damage	No Damage
D	Thermal Properties			
1	Thermal Shock Resistance	ISO 10545-9	No Damage	10 Cycle
2	Thermal Expansion	ISO 10545-8	9 x 10 - 6 mm	6.5 x 10 ⁻⁶
3	Moisture Expansion	ISO 10545-10	No	Nil

PACKING DETAILS

TILE SIZE	THICKNESS (APPROX)	NO. OF TILES / BOX (APPROX)	WEIGHT / BOX (APPROX)	COVERAGE AREA
600X600 mm	8.8 mm	4 Nos	28 Kgs	1.44 sq.mt.

EXPORT PALLETS PACKING DETAILS

Standard & Normal Wooden Pallets Packing Details

Container Type	Size (cm) 9 mm Thickness	Pcs/ Box	Sqm./ Box	Approx Weight/ Box (Kgs.)	Pallet Dimensions	Pallets	Box/Pallet	Total Boxes	Total SQM	Approx Total Weight (Kgs.)
20 Feet Container	60x60	4	1.44	28	(37" x 44")	(24)	(40)	960	1382.4	27430



LAYING INSTRUCTION

1. Plaster the surface of the floor/wall to be tiled smooth and complete the plastering and curing at least two weeks prior to tiling.

2. Before fixing tiles, lay them out in desired pattern and make sure an acceptable blend of color, please note that certain amount of shade variations are inherent in the manufacturing of tiles.

3. For fixing tiles we recommend the use of tile fixing adhesive for best result. Also follow tile fixing instruction provided along with adhesive.

4. For fixing tiles on the floor/wall using sand & cement follow the instructions below:

(a) Use cement and sand mortar in the ratio of 1/4 & add water to create a consistent mixture.

(b) Once the mixing has been completed use the same within one hour.

(c) Apply a 20-30 mm layer of bedding material all over an area of 1 sq. mt. at a time on the surface of area. Apply fine slurry to the back of the tiles to ensure proper and full bedding press gently for even adherence at the back of tile.

DO NOT USE IRON HAMMER OR ANY HEAVY OBJECT TO PRESS THE TILES.

5. For fixing the tiles on wall dado we recommend the use of adhesive, please follow the instructions for the same. We do not recommend the use of sand and cement for fixing on dado.

6. Mark and layout the tiles from the center of the area to be tiled so that cut tiles, if any will be on the outer edge towards the wall.

7. It is advisable to maintain a gap of 1mm to 2mm between adjoining tiles to allow for possible expansion as per BIS/EN norms.

8. Allow 3-4 days for bed curing. After this period, fill the joints with the epoxy grouts.

9. Fifteen minutes after finishing the grouting process wipe off the excess grout with a damp sponge and polish the tiles with a soft and dry cloth for a clean surface. The tiles can also be cleaned by mild cleaning acid.

10. Please note that the company does not accept any liability in case of problems arising due to non adherence to these fixing instructions.